

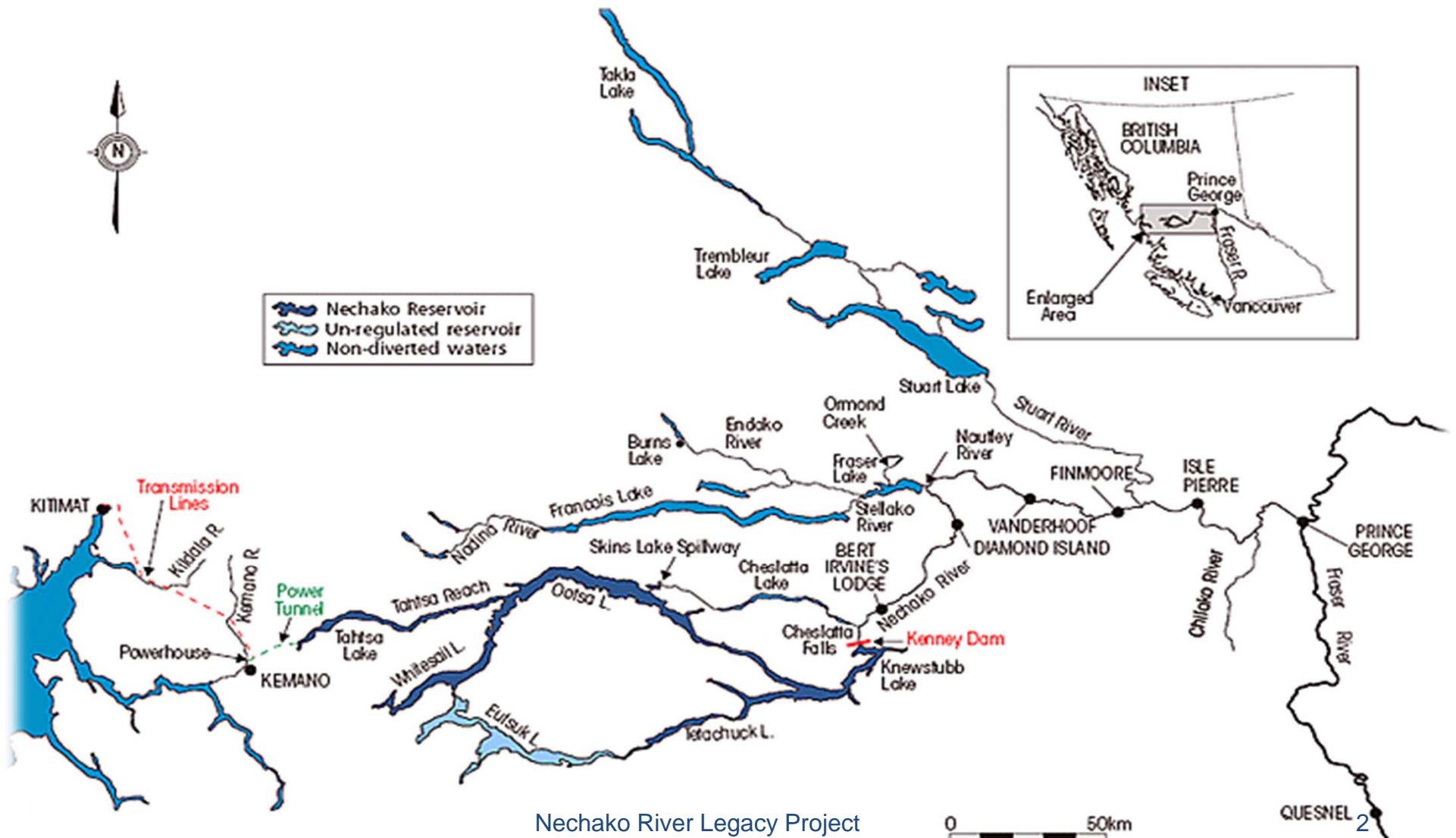
An aerial photograph of a large dam on the Nechako River. The dam is a long, low structure with a spillway on the left side. The river flows from the top right towards the dam. The surrounding landscape is a dense forest of evergreen trees. The sky is clear and bright.

Nechako River Legacy Project

Presentation by
Cheslatta Carrier Nation

May 17, 2012

The Nechako Reservoir



Relocation of Cheslatta

- Kenney Dam resulted in forced relocation of Cheslatta-Carrier Nation
- Building the dam flooded Cheslatta land and traditional hunting, fishing and logging areas
- For 60 years, the Cheslatta have been rebuilding their community





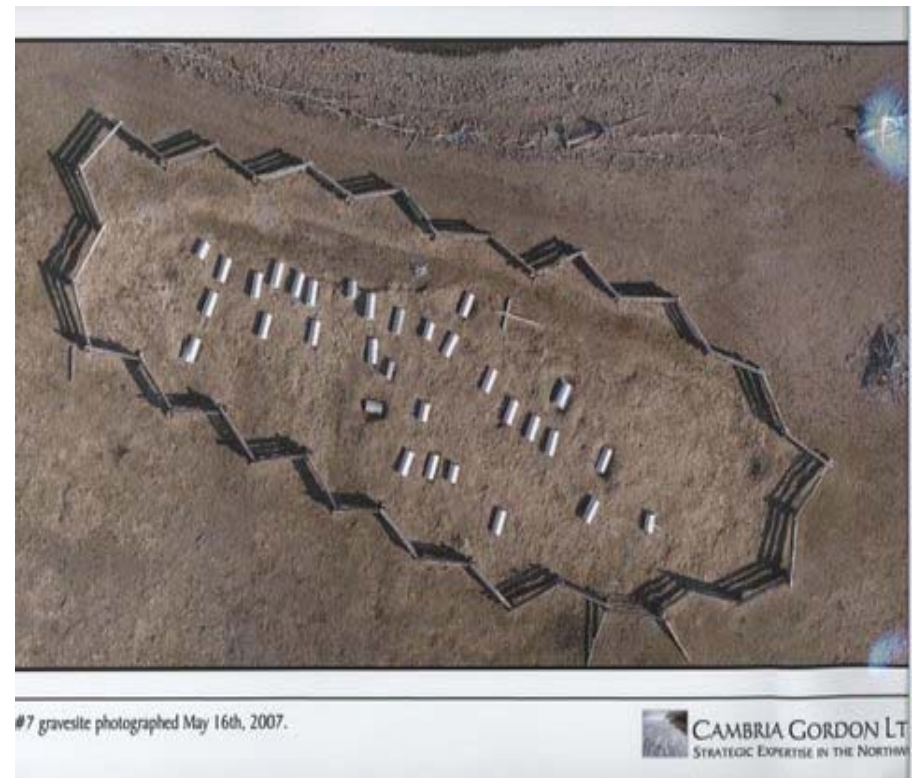
Effects of Flooding



The gravesites

Cheslatta gravesites flooded year after year

Cemetery flooding due to high releases



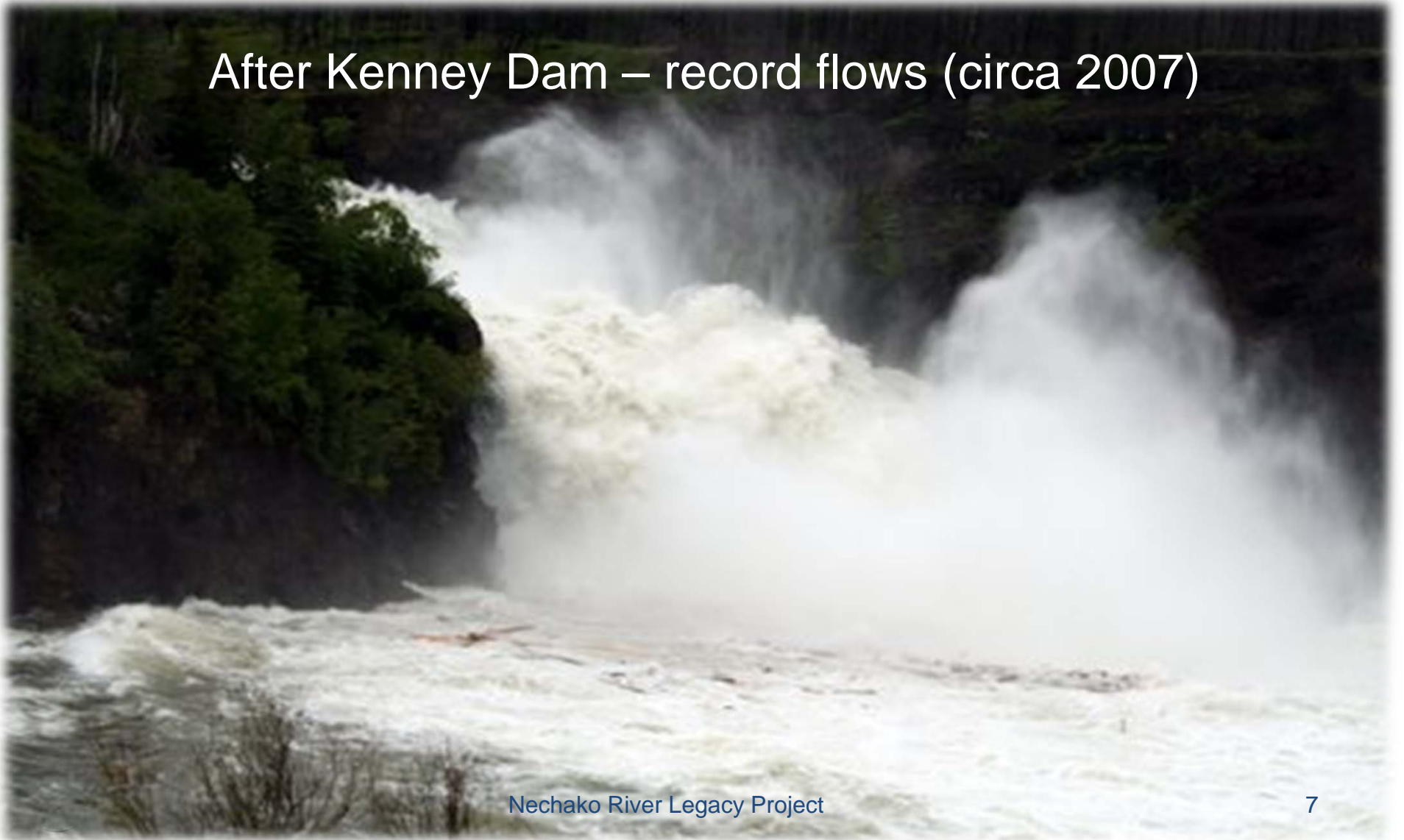
Environmental Devastation - Cheslatta Falls

Prior to Kenney
Dam(circa 1910)

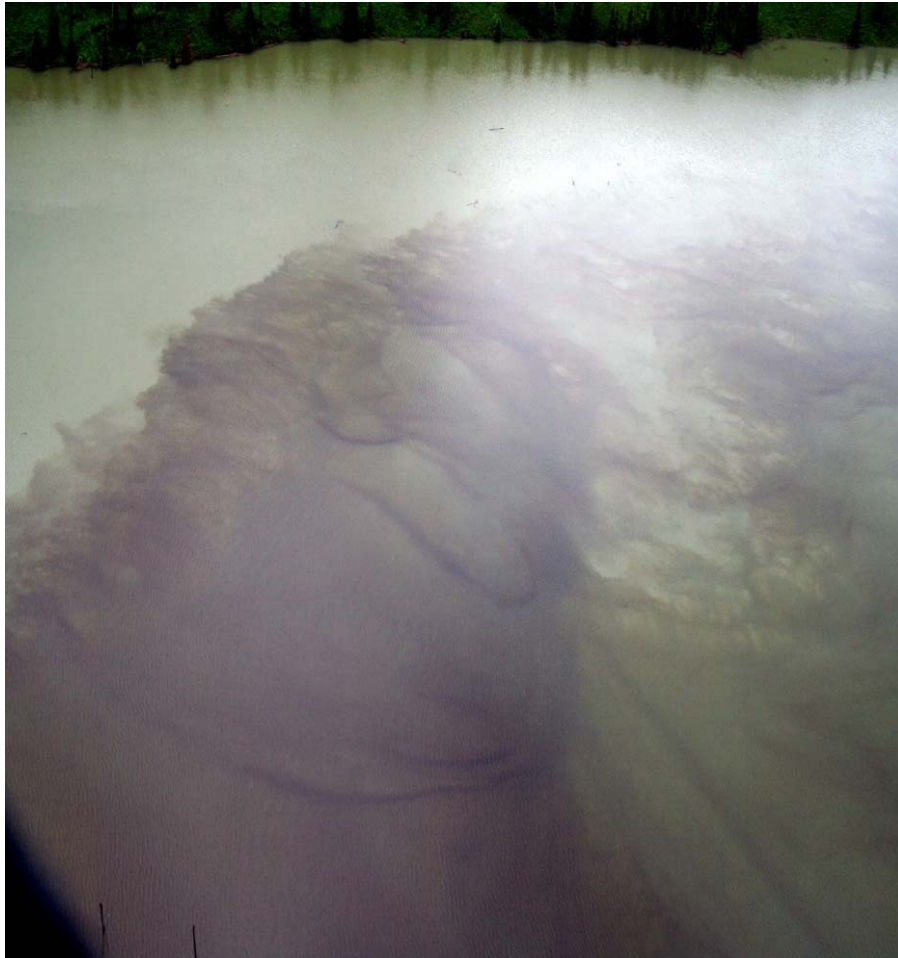


Environmental Devastation - Cheslatta Falls

After Kenney Dam – record flows (circa 2007)



Economic Devastation



- For centuries the Cheslatta people lived on the shore of Cheslatta and Murray Lakes
- Environmental effects of Kenney Dam led to loss of fresh-water fishery that used to sustain Cheslatta people
- Cheslatta fresh-water fishery court case currently held in abeyance



The Solution: Nechako River Legacy Project

A Kenney Dam Water Release Facility (KDRF) will:

1. Stop flooding of Cheslatta graves
2. Stimulate a massive environmental restoration of Upper Nechako watershed
3. Begin revitalization process for the Cheslatta land and people



The Solution: Nechako River Legacy Project

- Previously committed by Provincial government to build KDRF
- NEEF recommendation in 2001 to build KDRF
- Unanimously supported by Nechako Watershed Committee



Cheslatta's Proposal

- Cheslatta and industry partner Surespan will design, permit, construct, and operate KDRF
- KDRF will include a hydroelectric power plant that will be interconnected to the BC Hydro grid
- Revenue from the sale of electricity will help fund the construction of the facility



Questions

Mike Robertson

Senior Policy Advisor
Cheslatta Carrier First
Nation

(T) 250-694-3334

